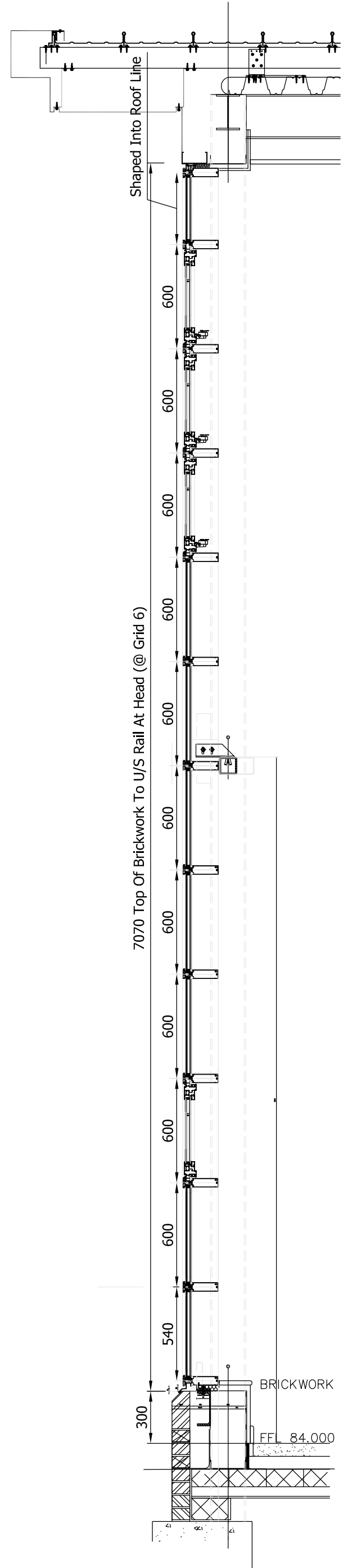
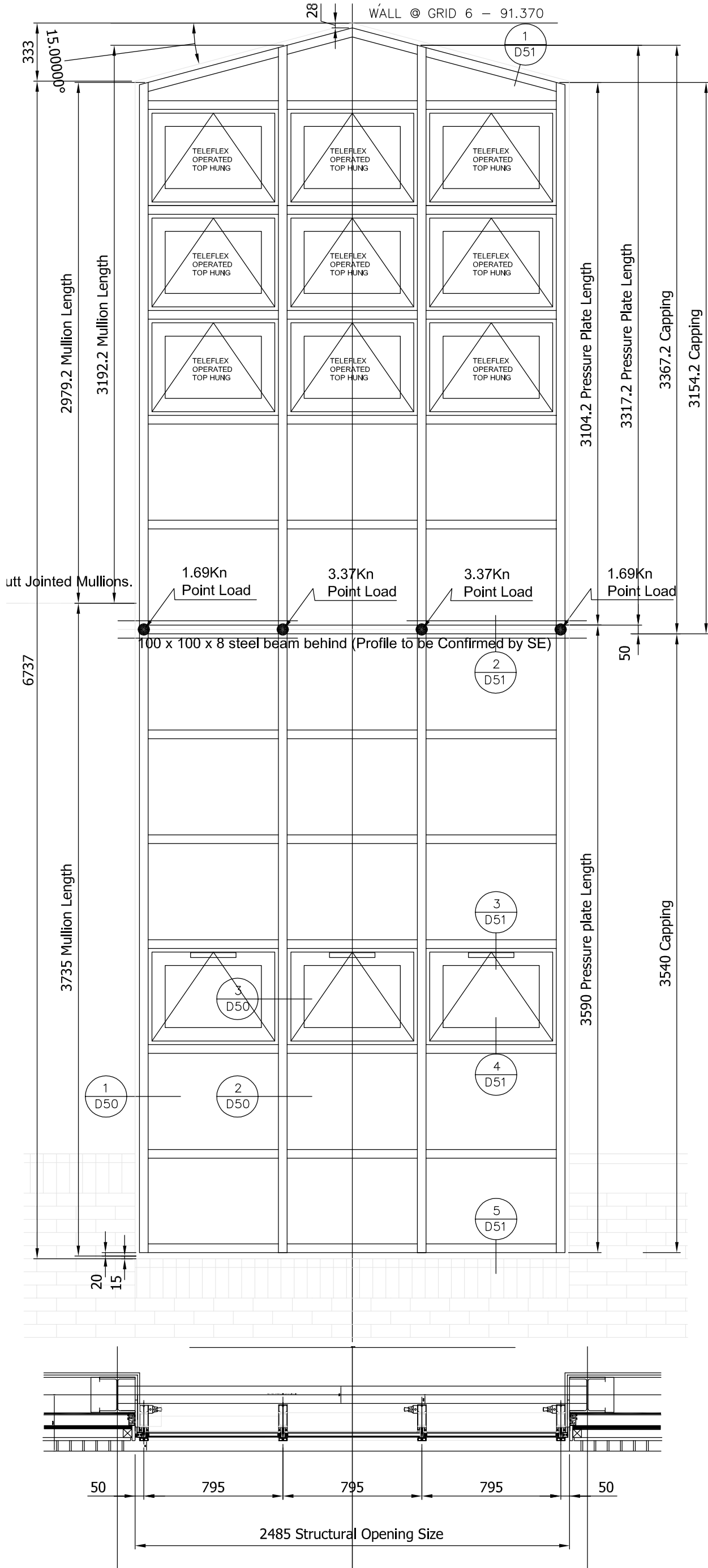


**Comar 6 EFT Curtain Walling**  
 Aluminium Profiles - Internal White PPC  
 RAL 9003 (M4L0393) Off-white  
 External Profiles : BS 10A03 (M4L0437) Grey

**Comar 5Pi Top Hung Opening Windows.**  
 Fitted with stainless steel friction stay's and  
 operated by manual teleflex gear & Midl Handles  
 Colour : White .

**Glass & Glazing**  
**Curtain walling:**  
 28.4mm Double Glazed Units Comprising:  
 6.4mm Pilkington Suncool 70/40 with Active  
 Coating Laminated Glass Outer Pane.  
 16mm Argon Cavity - Silver Spacer Bar  
 6mm Clear Toughened Inner.  
 Centre Pane U Value : 1.1w/m2K

**Comar 5Pi Top Hung Opening Windows.**  
**BS6399 Compliant**  
 Additional Reinforced Cleats to Sash's  
 Stainless steel friction hinges with restrictor (100mm)  
 Espaglocking with shootbolt extensions  
 4 keeps per sash  
 WS530 Key Locking Handles, Silver Finish.  
 Vector Excluders to top of sash (LX817XSLF)  
 Lifting Ramps (WS561).



TITLE:	CONTRACT No.	DRAWING No.	REV.	SCALE	REV.	DATE	COMMENT
Schedule Curtain Wall Screen W16	C 1262	E050	A	1:25@A3		21.10.08	Rev'd to Architects Cmts. Colours altered.
Drawn by:	SL (RHD).						
Date:	24.09.08						
Job Title:	Abercrombie School Chesterfield.						